



Objects of Intention
Paris, France
Team leader
Shaoshu Zhang, France
Team members
David Telerman, France

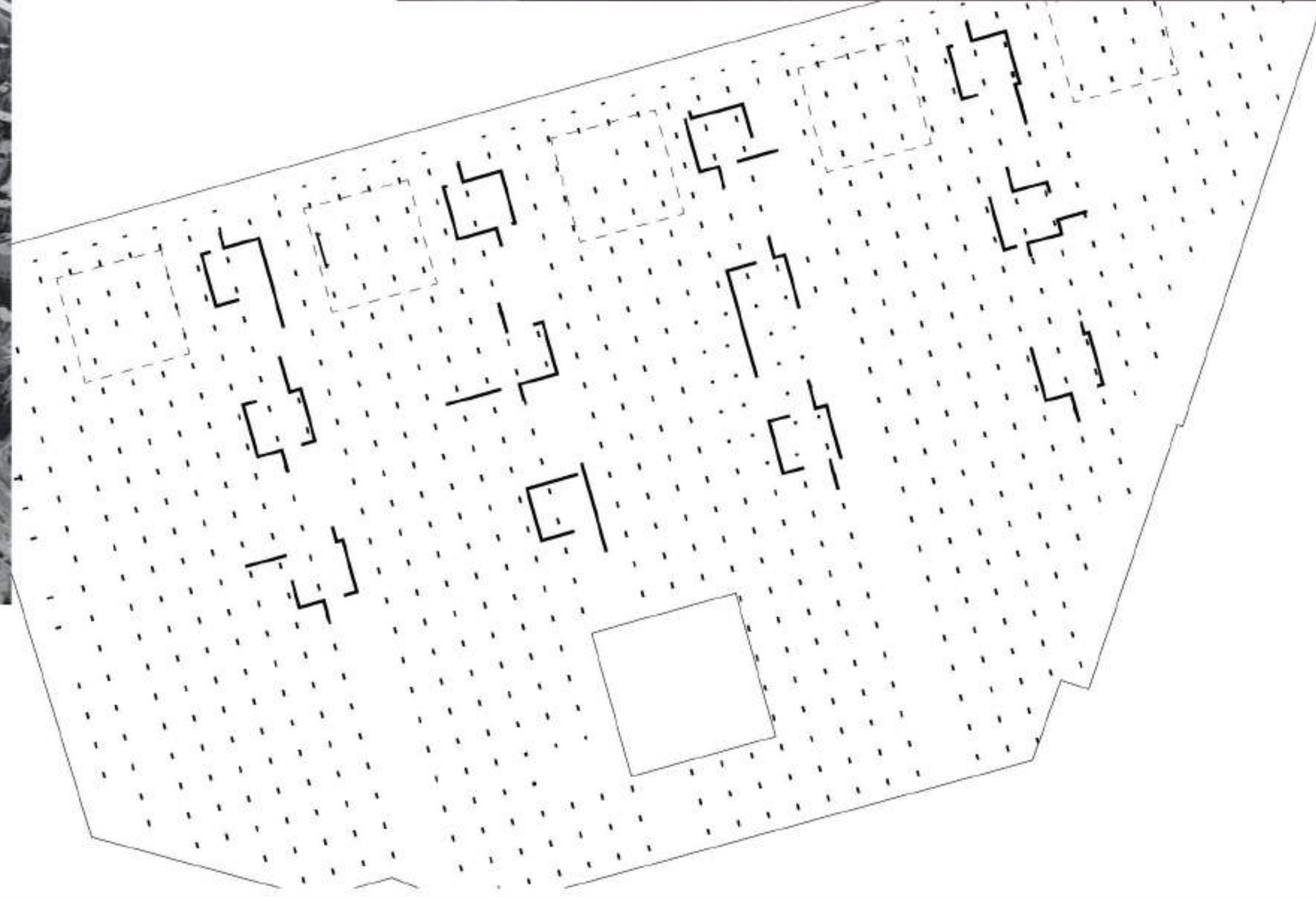
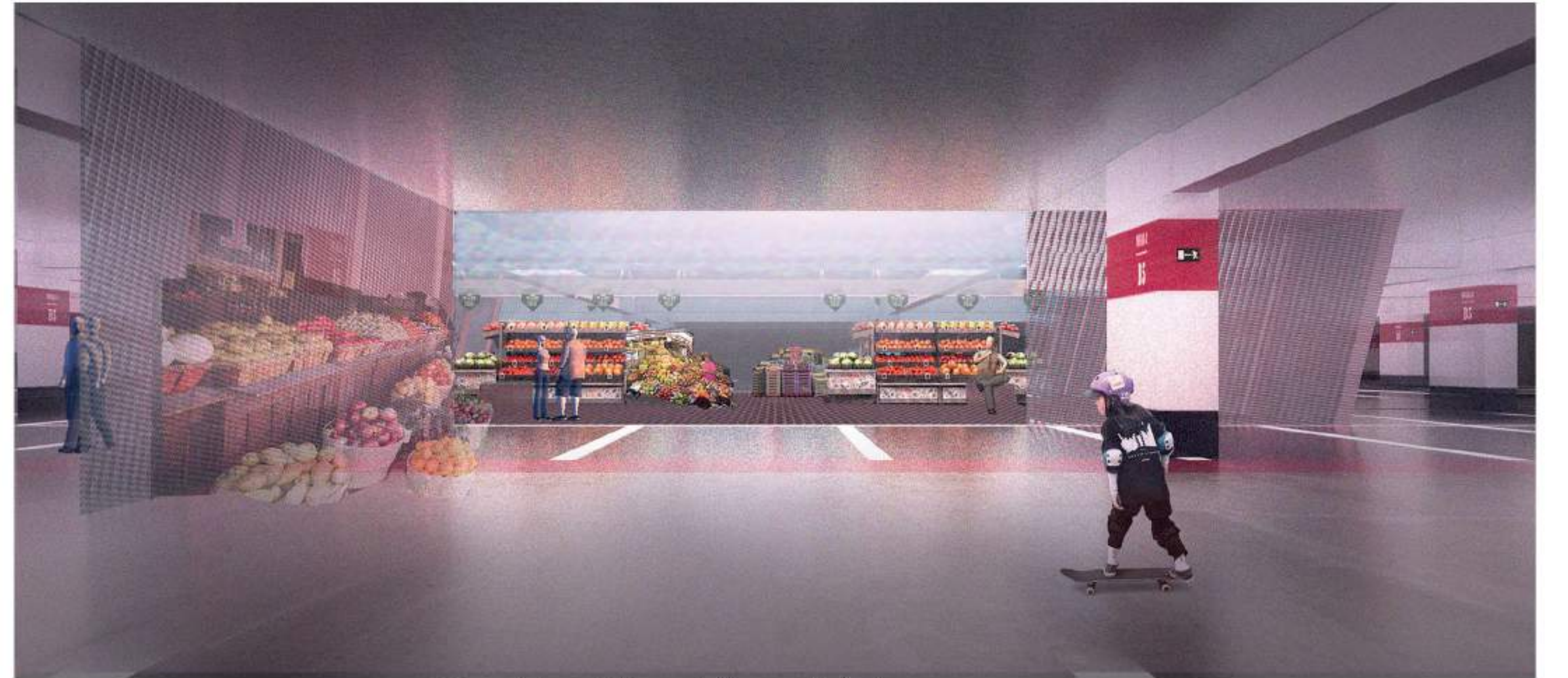
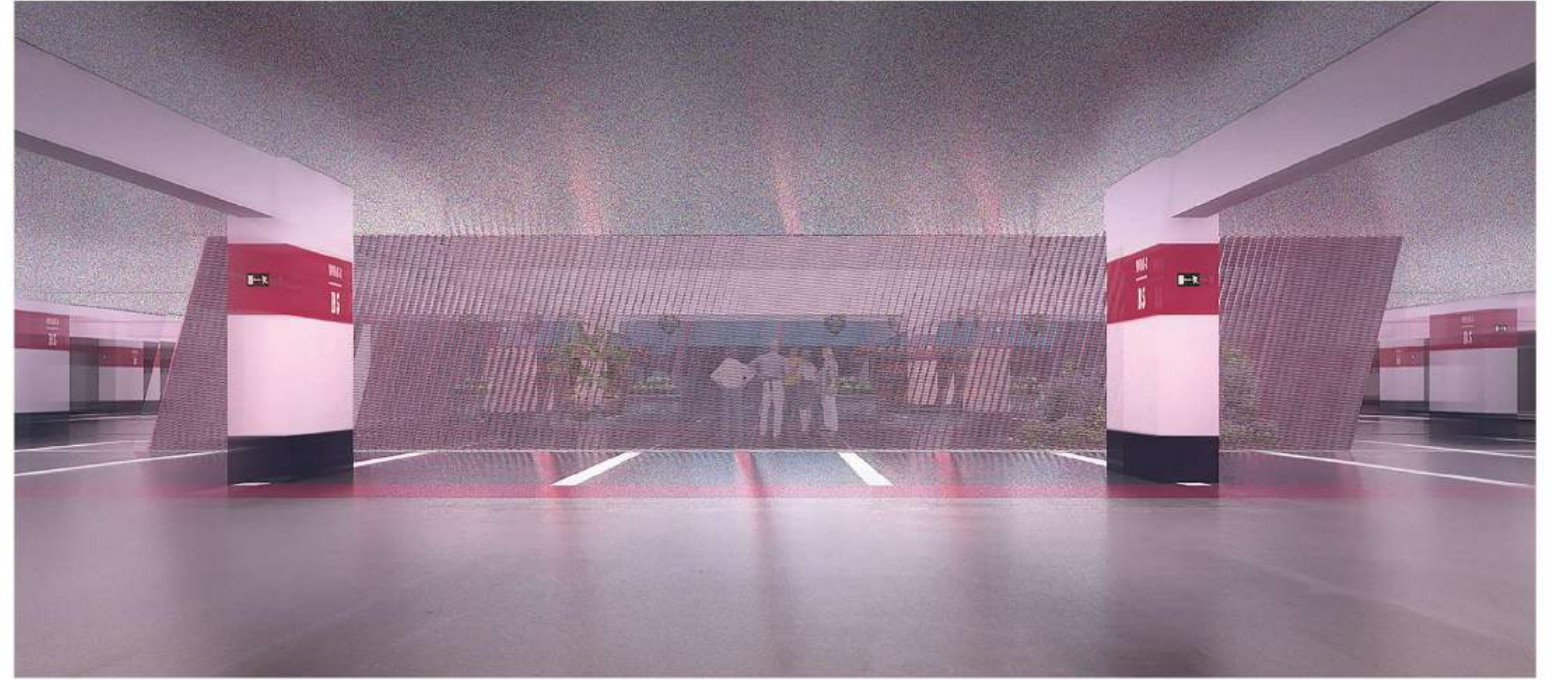
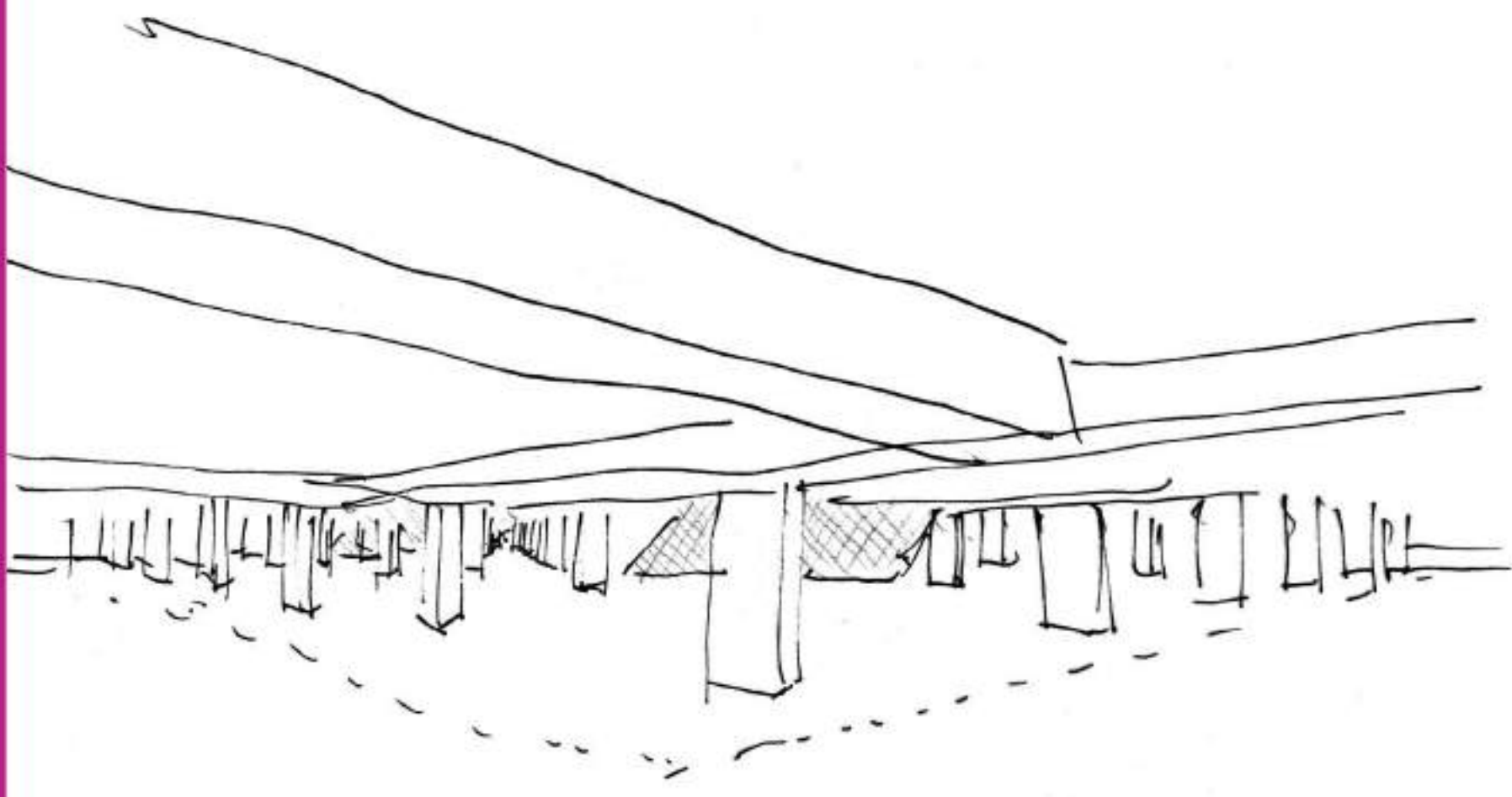
LINES OF REPAIR

Lines of Repair

The lines of repair bring the lacking verticality to the horizontal landscape. They revisit the architectural grammar of the Triangle des Gares by Jean Nouvel and the Euralille Carpark in particular: continuity of the metal mesh spanning on the roof of the complex, use of the grid defined by the repetition of the concrete columns and the painted marks on the floor as well as the use of color on the walls kept as a visual reference and a marking point to distinguish the underground areas seen from the shopping center.

The lines of repair cross the levels of the building. They work like cannons to bring the comfort of natural light, air and sound to the lowest floors and the vertical circulation for the visitors. Like the "magnets" conceptualized by Cedric Price, they stimulate new patterns of public movement and increase the use of the existing place. Based on the principle of modularity, the metal walls open up, irradiating on the surroundings, thus defining new patterns and functions.

The lines of repair are symbolic totems. They scar the existing building, bring nature inside, activate life and define new spaces for the future. Restoring meaning.

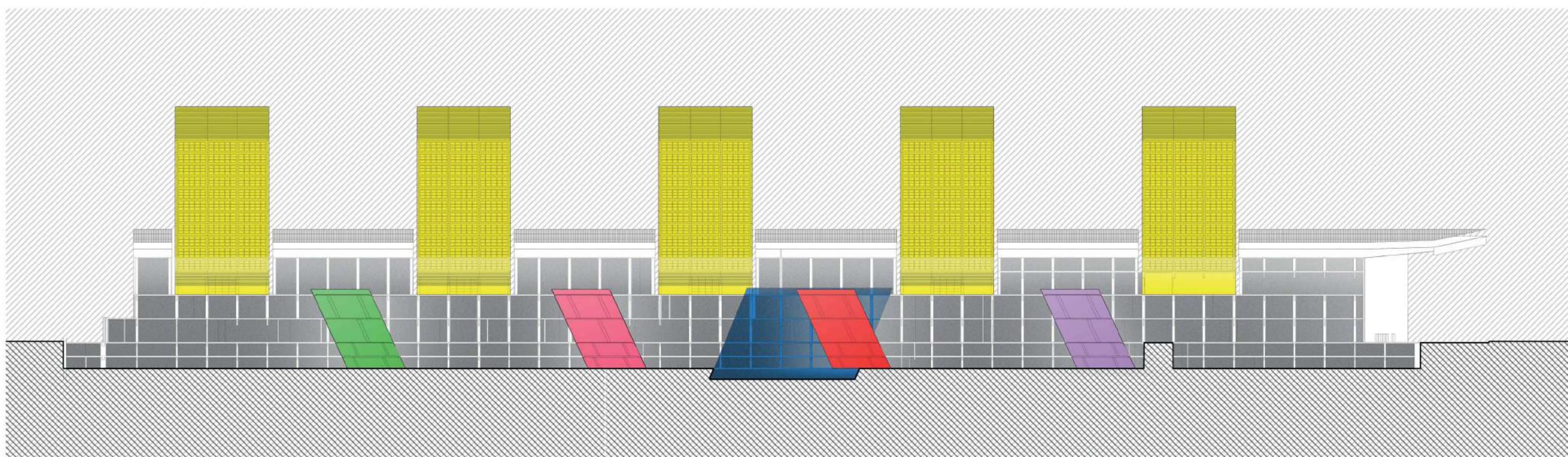
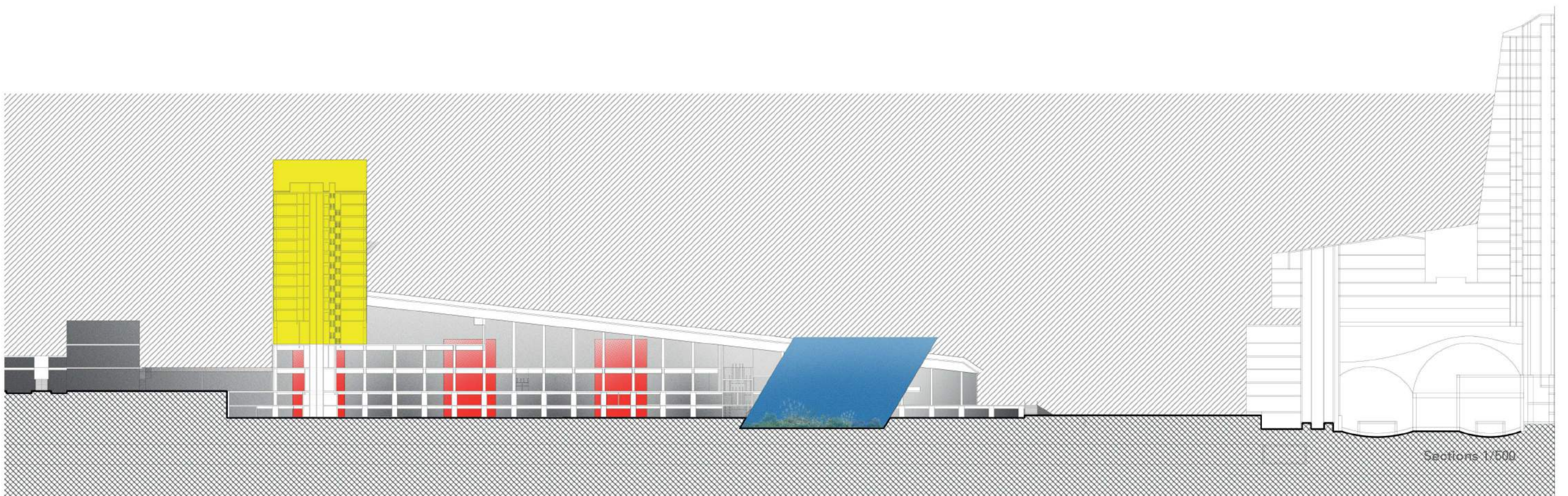


The lines of repair are parallelepiped crossing the levels of the complex. Light, sound and air irradiate on the surroundings, defining new patterns and functions for the underground carpark.

Objects of Intention

/01

Lines of Repair



Objects of Intention

/02