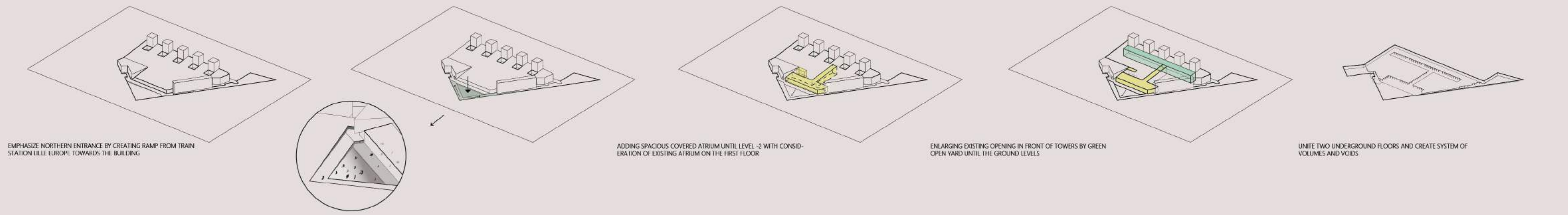


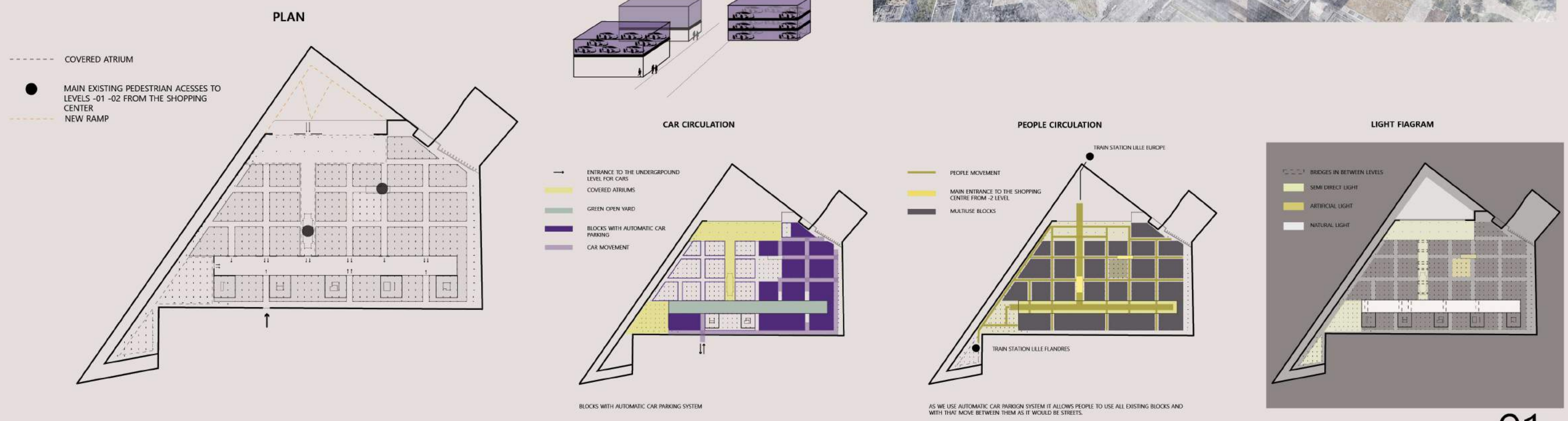
ARCHIMATES
Saint-Petersburg, Russia
Team leader
Mikhail Korotkov, Russia
Team members
Iana Kim, South Korea

NEW LAYER CITY

new layer city

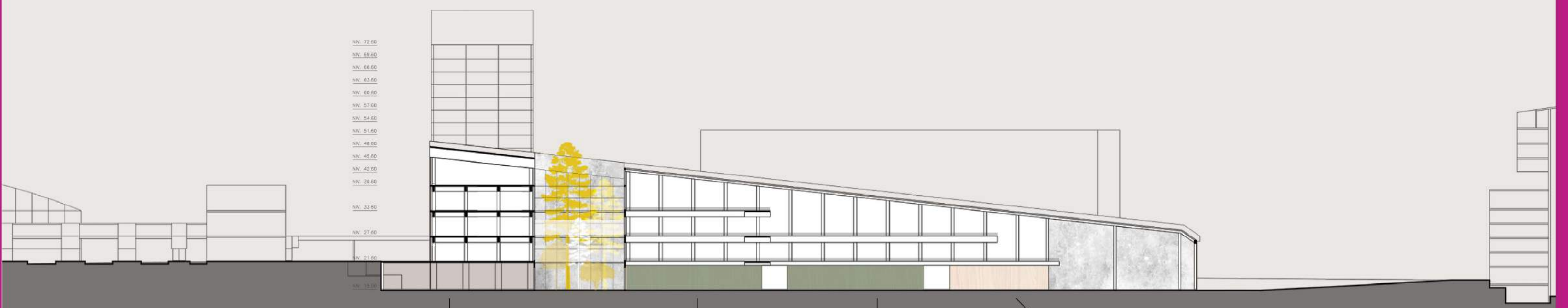


The main idea of the project is to bring to the underground levels of the Triangle Des Gares natural, "breathing" space which reinvents the building itself. We interfere the architectural piece by Jean Nouvel respecting the existing structural systems. To accomplish the idea, we organize the spacious entrance from the north leading to the green open yard through the big covered atrium. This system brings natural light through all the floors down to the underground level. In order to develop the car parking space, we unite two underground floors into one and create the system of volumes and voids, a representation of old city center blocks. These volumes provide flexibility to the space in terms of usage, allowing to fill it with any program according to the needs of time. Still with the present demand for parking lots we organize the automatic car storage system in some of the blocks. In the future it can be easily changed, since the solution is completely sustainable. Thus, connected with the surrounding underground infrastructures, full of light and peace, new reinvented space of car parking is supposed to be not only a pleasant buffer between lower and upper levels of Lille, but also an independent environment for new programs in the dense city.



team ARCHIMATES

new layer city



URBAN FARMS
CERAMICS
ARTIST WORKSHOPS
OPEN STUDIOS

GREEN OPEN YARD ALLOWS TO USE SPACE IN VARIOUS WAYS

LACK OF NATURAL LIGHT CAN BE BENEFICIAL FOR ACTIVITIES SUCH AS LIBRARY ALSO NATURAL CAN BE DELIVERED THROUGH DIFFERENT SYSTEMS TO USE IT IN URBAN FARMS AND CLOSED GARDENS

DIFFERENT TYPES OF ACTIVITIES CAN BE OBTAINED INCLUDING GYM, COWORKING SPACE, DATA BASE CENTERS

team ARCHIMATES