



ByunKim
Seoul, Korea
Team leader
Sun Woo Byun, Korea
Team members
Hyung Jun, Korea

REVERSED EURALILLE



Reversed Euralille New typology of infrastructure

The Euralille of this project is given the status of PENTHOUSE beyond the status as functional space through the strategy of GROUNDSCAPE of the underground carpark.

Euralille was planned as an infrastructure node through the 1989 Utopia Plan. However, due to the environmental characteristics and physical scale of the fossil fuel vehicle, it was realized in a limited state, leaving only the shell of its will.

In order for humans to coexist with the extremely urban elements such as infrastructure, the existing conventional building TYPOLOGY must collapse, and the possibility can be found in carpark sleeping underground in Euralille.

Infrastructural features of Euralille are still valid, and the utopia has the potential to be reconfigured through fuel conversion and vehicle diversification.

Currently, the Tower-Podium typology uses the upper tower as an urban destination and a space to stay, and in the podium, commerce for capital purposes is formed, and citizens pass through it, and only functional spaces are arranged underground to support it.

However, the tower is an independent space, isolated and restricted to access, making it a non-urban space, which is very inappropriate for citizens to realize the infrastructure utopia.

Looking at the above typology through the reverse of the cross-section, the underground space is transformed into the most urban and place where citizens want to stay through the realization of groundscapes beyond functional programs.

Accordingly, coexisting with modern diversified mobility, by discovering the possibility of underground as an urban space through a sectional transition, we declare an alternative typology of the new era.

Masterplan



Urban elements



1989 Vision - Euralille project



Solitude of high-rise tower



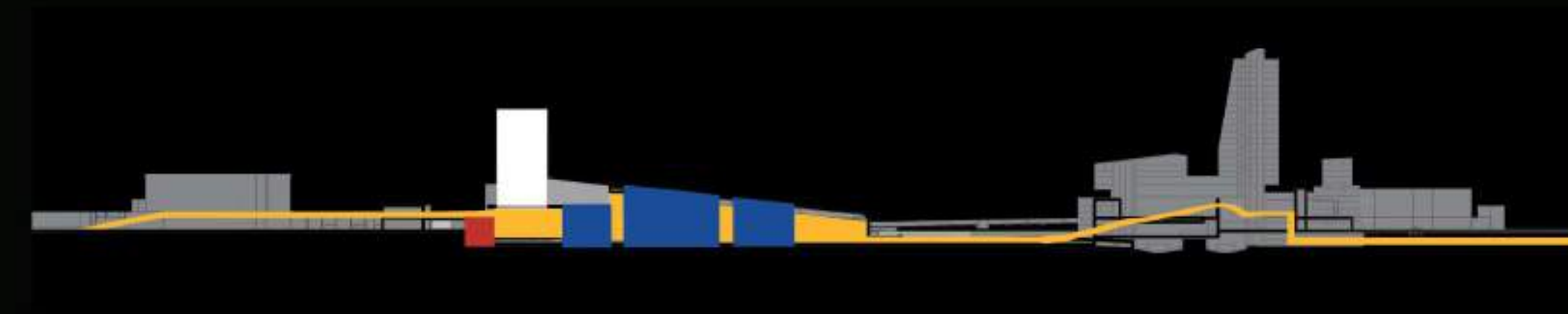
Typical Building Typology



Reversed Building Typology



Sectional Connection



- New-Mobility
- Sunken entrance
- Commercial blocks
- Hyper functional tower

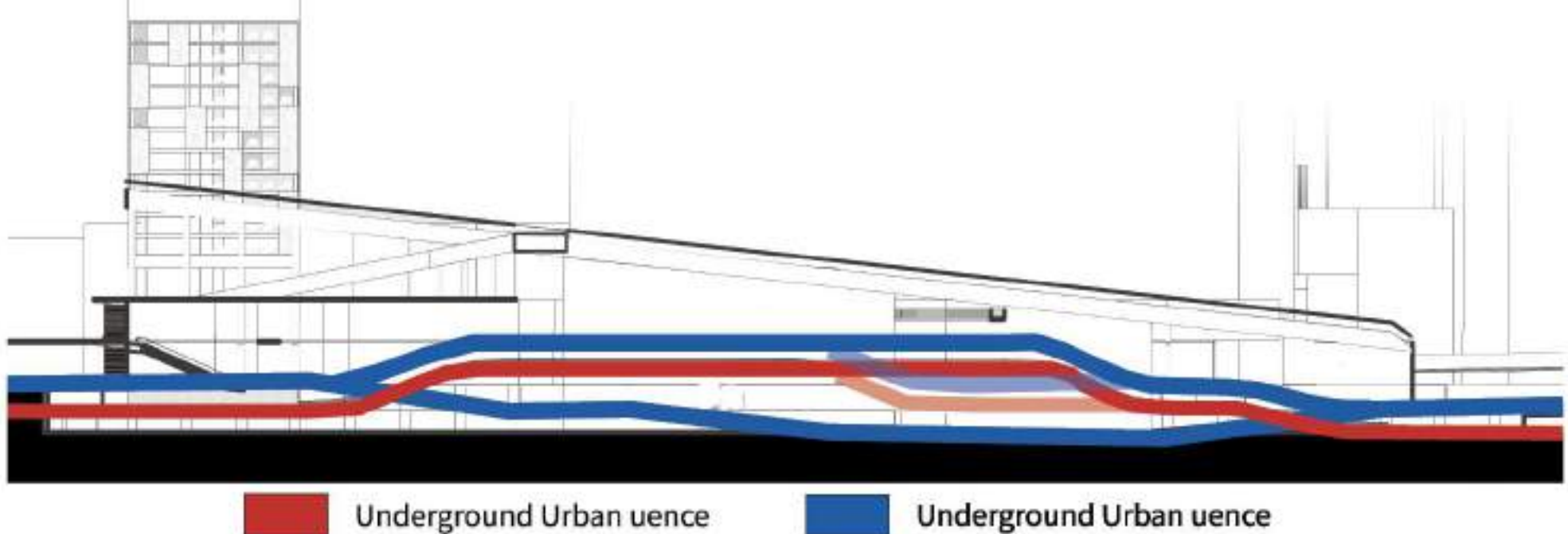
Unveil the Olympic

Diversified Mobility with Urban Axis

Urban axes that cross architectures are connected to newly diversified mobility and penetrate the site. The interface between infrastructure and architecture that the existing Euralille project did not realize is possible through the spatial-separation in section and the promnord of Human-scale mobility. This gives moderate-speed mobility to 'Lage M' city center, so there is a possibility that the urban experience will be maximized.

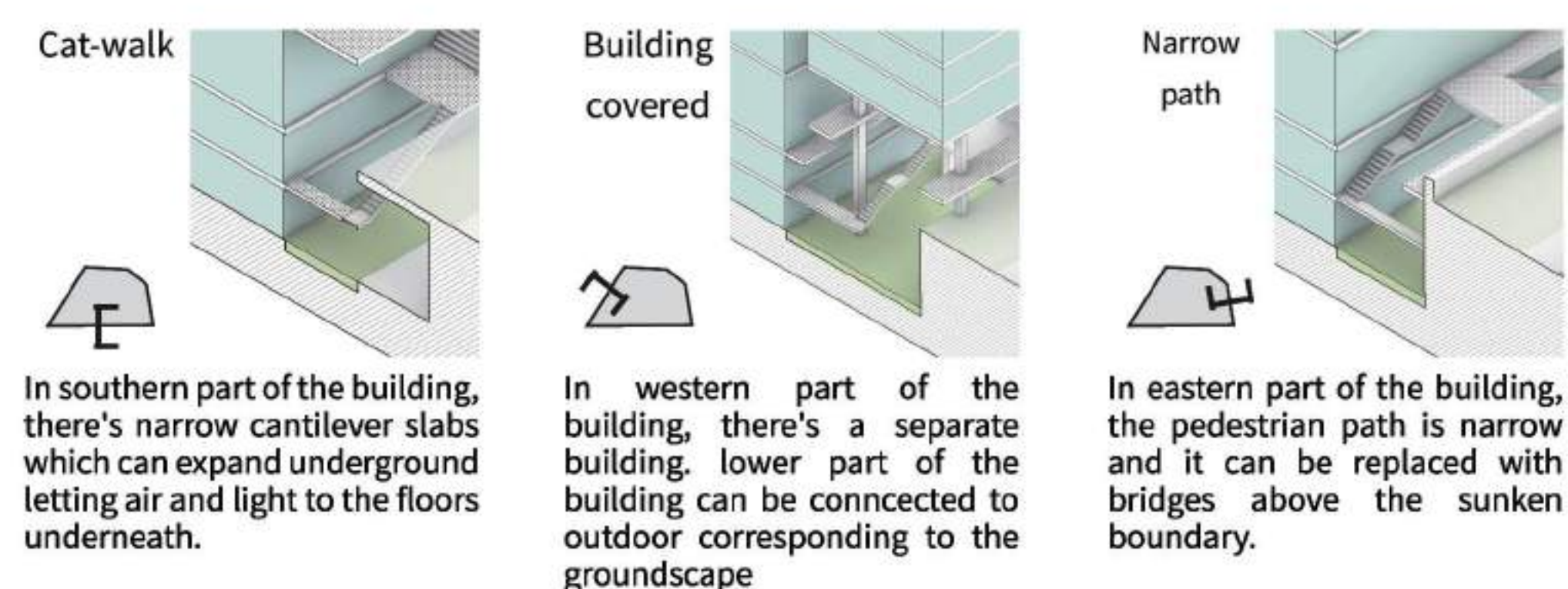


Underground Urban Sequence



Defining the Boundaries

To develop the underground space through strategy of GROUNDSCAPE, strategy to achieve approachability as well as natural light and air is essential. In this project, because of its trait as an urban scale architecture, we can achieve them by defining the boundaries. There are three conditions of boundaries.



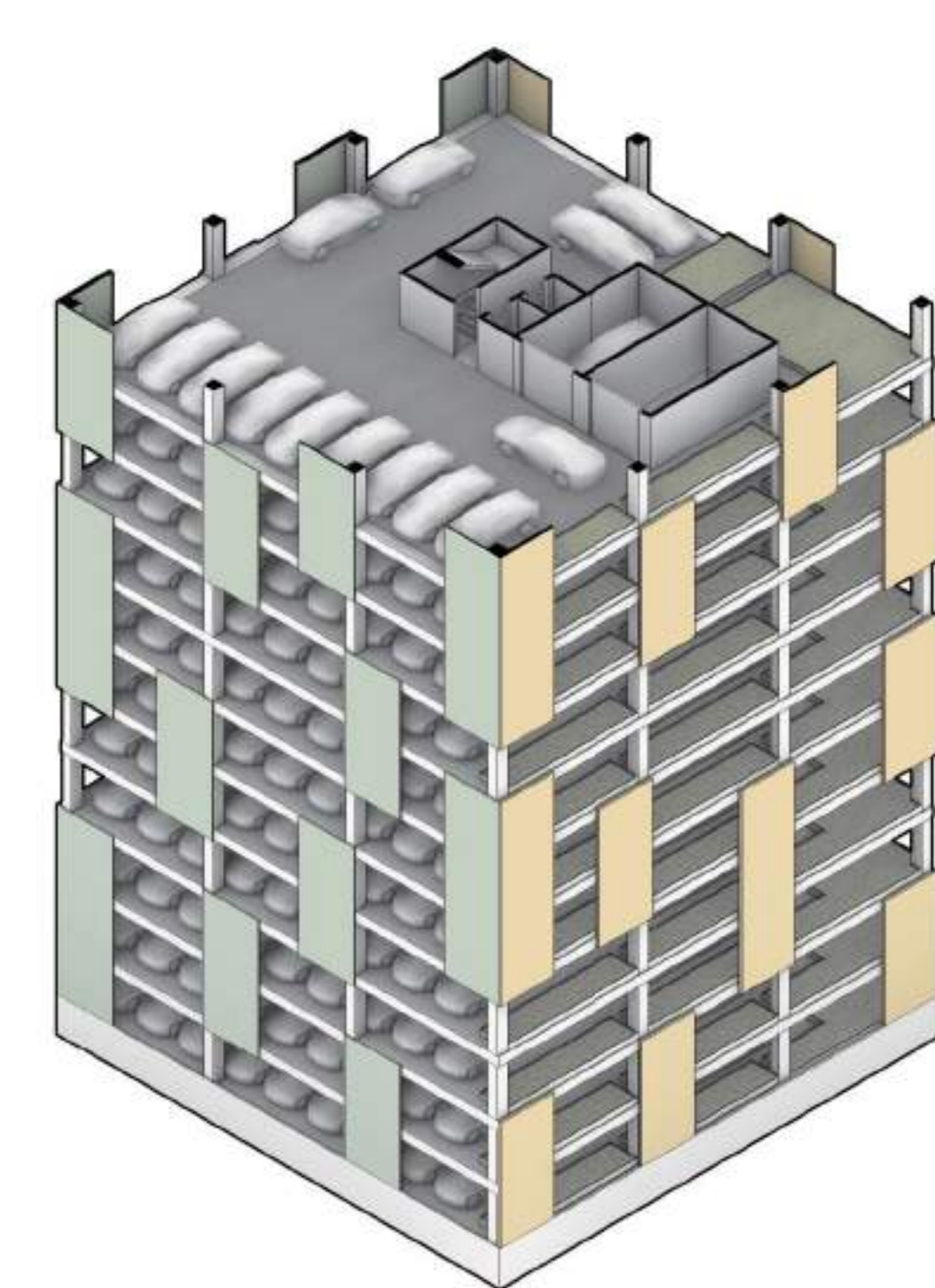
Cat-walk
In southern part of the building, there's narrow cantilever slabs which can expand underground letting air and light to the floors underneath.

Building covered
In western part of the building, there's a separate building, lower part of the building can be connected to outdoor corresponding to the groundscapes

Narrow path
In eastern part of the building, the pedestrian path is narrow and it can be replaced with bridges above the sunken boundary.

Hyper Fuctional Tower

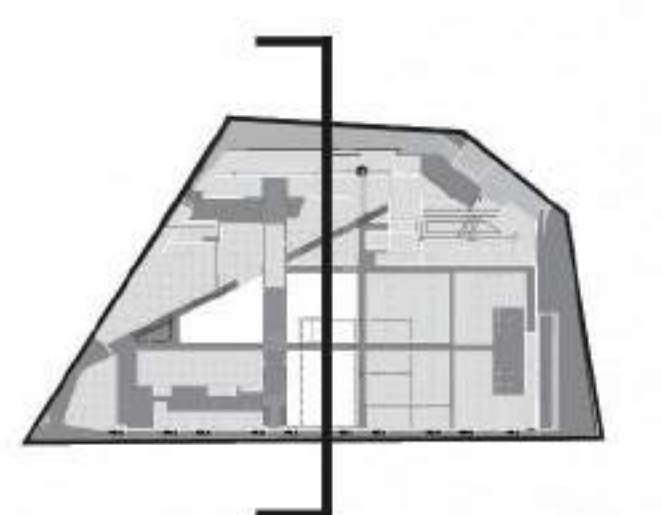
The tower is hyper-functional building type. Thus, in the project, it is defined as very functional programs. The tower where lights are well provided, wind is blowing, and has dense condition, it can provide benefits to the building by location such programs.



Tower Axonometric

- Wind turbine panel facade
Parking lot can be transformed to an open space which is a suitable place for wind turbines.
- Solar panel facade
In the tower, where lights are distributed well, solar panel can provide electrical energy to the building.
- Automated agriculture
Parking lot can be transformed to an open space which is a suitable place for wind turbines.
- Parking
In condition of high density, tower is suitable for storage of mobility.

0 10 20 50



- 1 Tower
- 2 Theater
- 3 Raining Plaza
- 4 Social Space
- 5 Light Passage