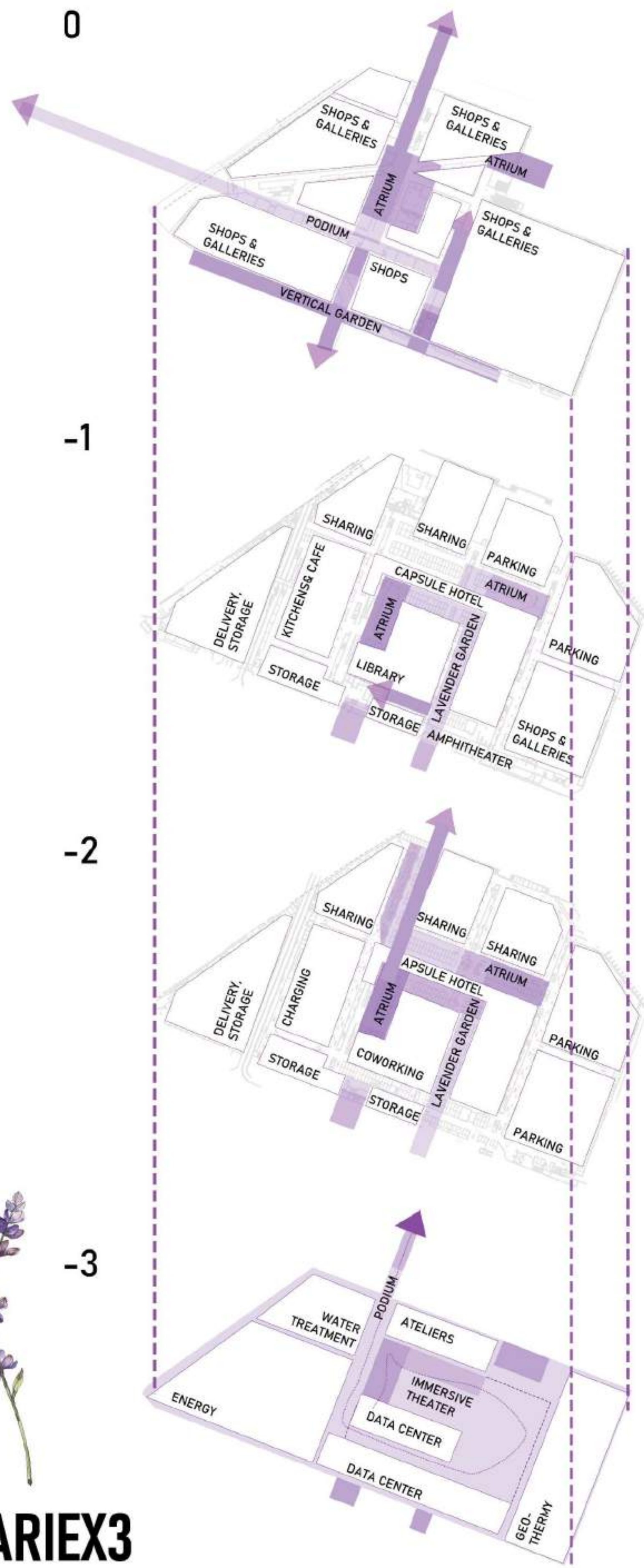




MARIEX3
 Bitola, Macedonia
 Team leader
 Maria Stojkoska, Macedonia
 Team members
 Maria Lepina, Russia
 Maria Baikova, Russia

THE PATH OF LIGHT

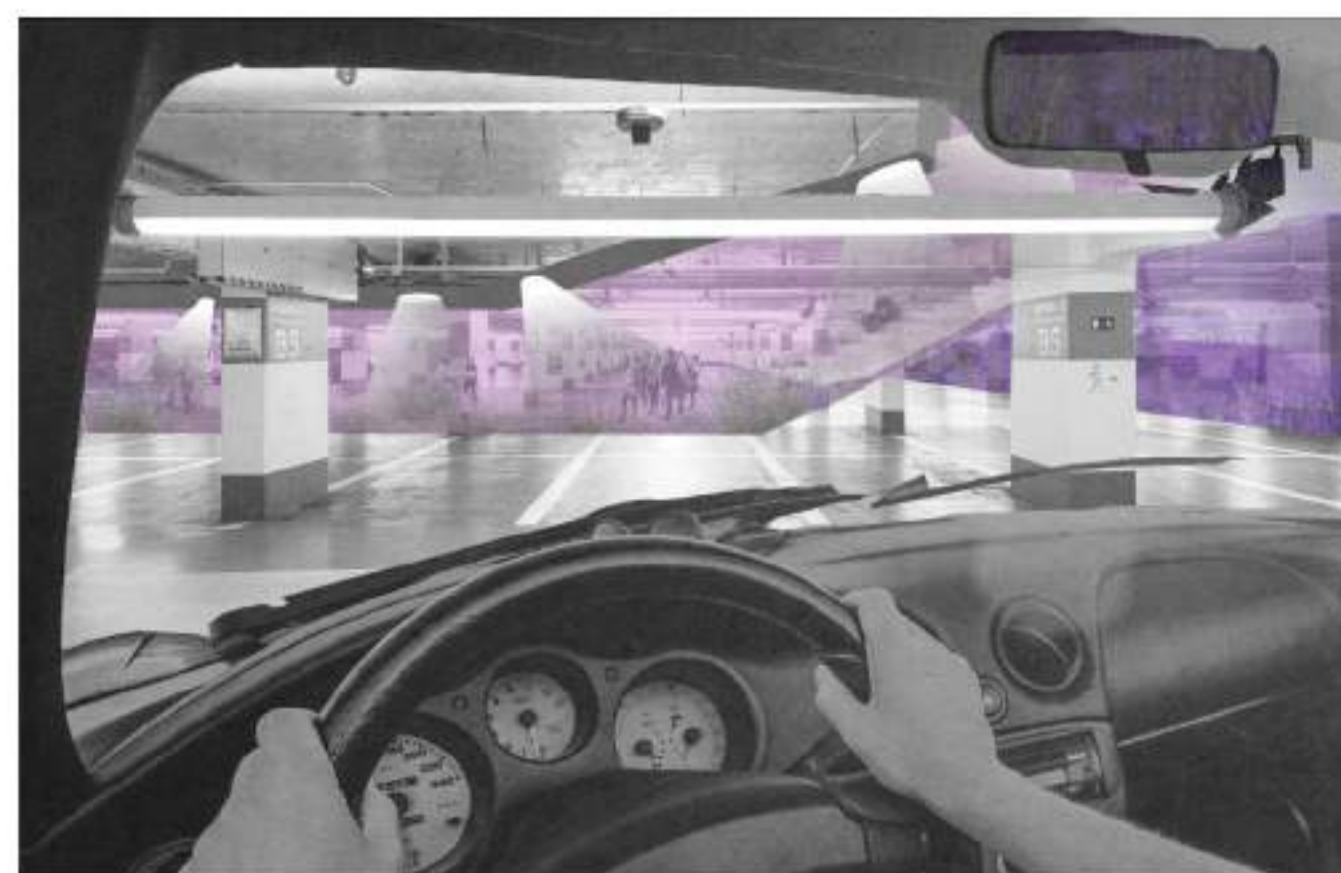
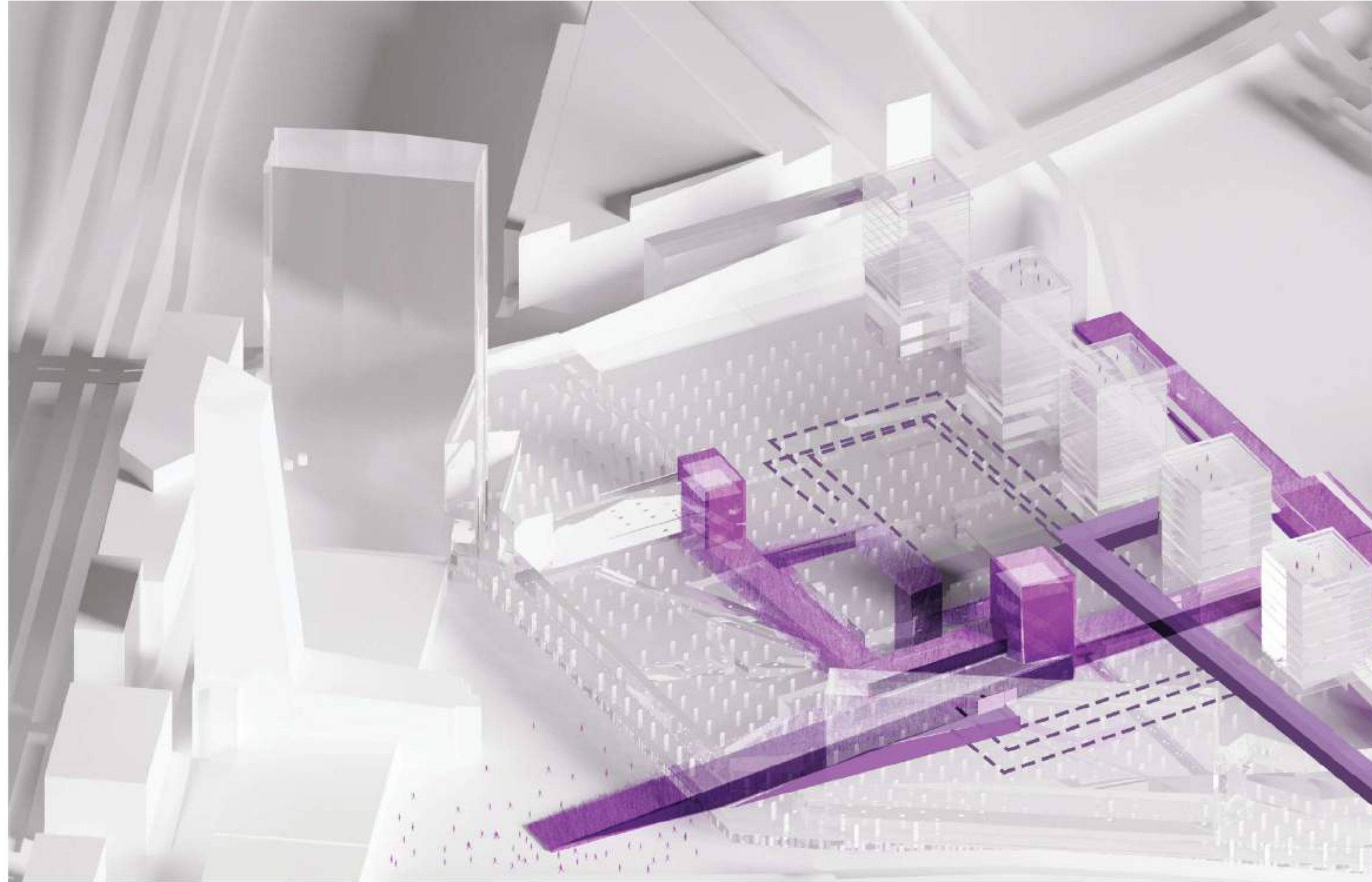
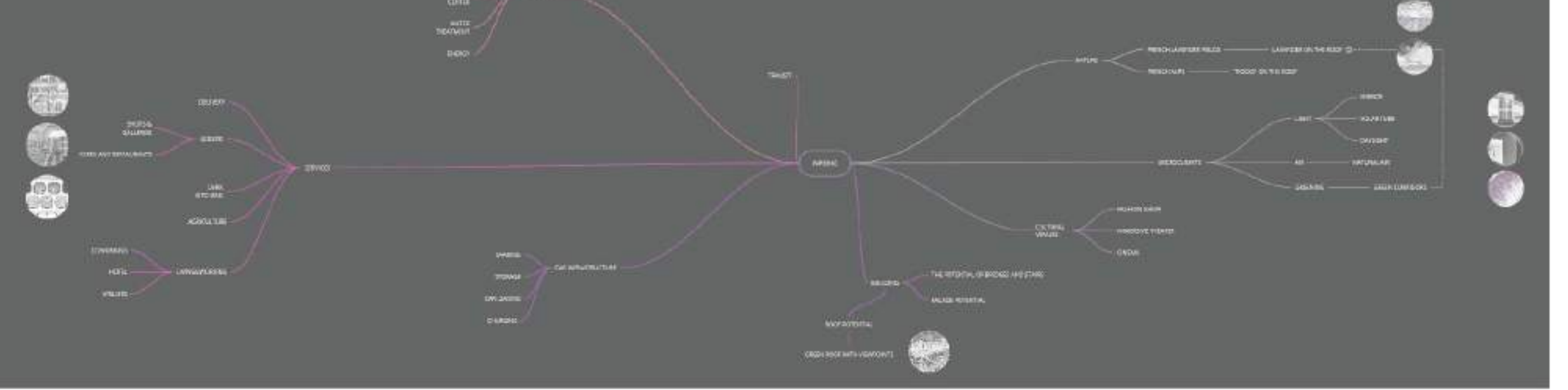
THE PATH OF LIGHT



MARIEX3

We all know that parking is associated with an urban interior in a darkened room, with the smell of a car. This place does not leave much impression after visiting it. In the project, we have moved away from the stereotype that parking is not an attractive place. We rethought the idea of parking lots and turned the car park into a linear landscape park that functions according to the laws of sustainability.

ANALYSIS

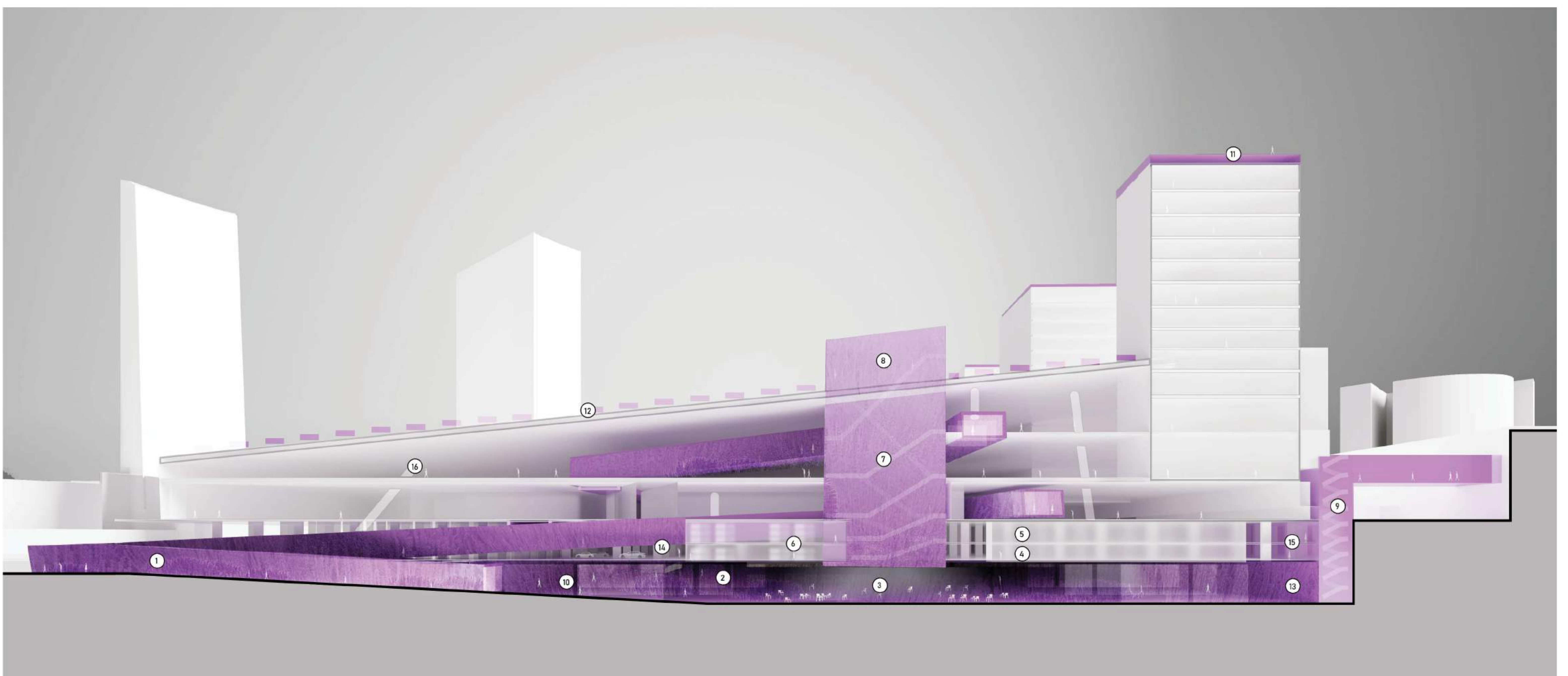


THE PATH OF LIGHT

SECTION 1/300

Our proposal is to fill the path of a person from one point to another with feelings. The visitor walks along the fragrant galleries full of Provence herbs or goes down to the immersive theater, or up to the viewing platform, or maybe he will spend the night here or work. This is a living picture or landscape that the user of the parking lot or the person who came to service his car observes.

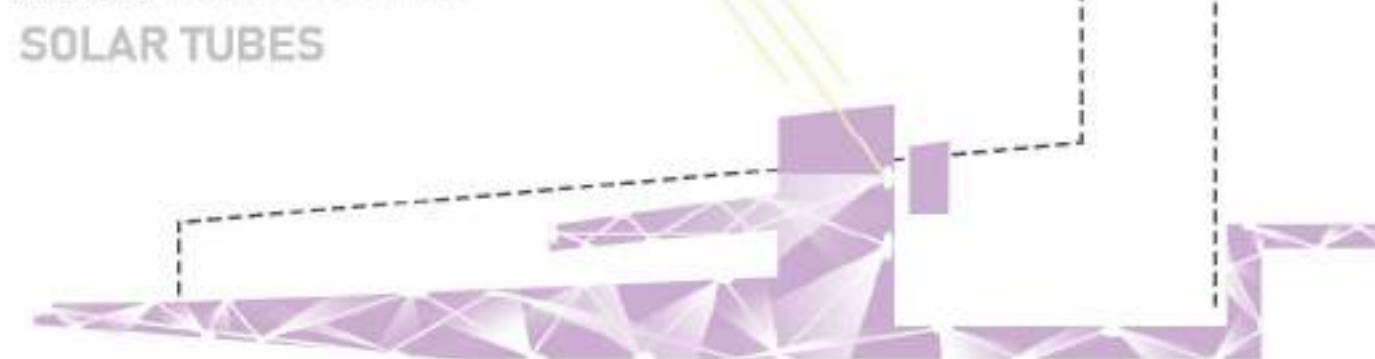
- 1. Lavender gallery
- 2. Geothermal pumping station
- 3. Immersive theater
- 4. Coworking
- 5. Library
- 6. Capsule hotel
- 7. Lavender atrium
- 8. Viewpoint
- 9. Vertical garden
- 10. Ateliers
- 11. View roof
- 12. Lavender hill with solar panels
- 13. Data center
- 14. Parking, sharing
- 15. Delivery, storage
- 16. Solar tubes



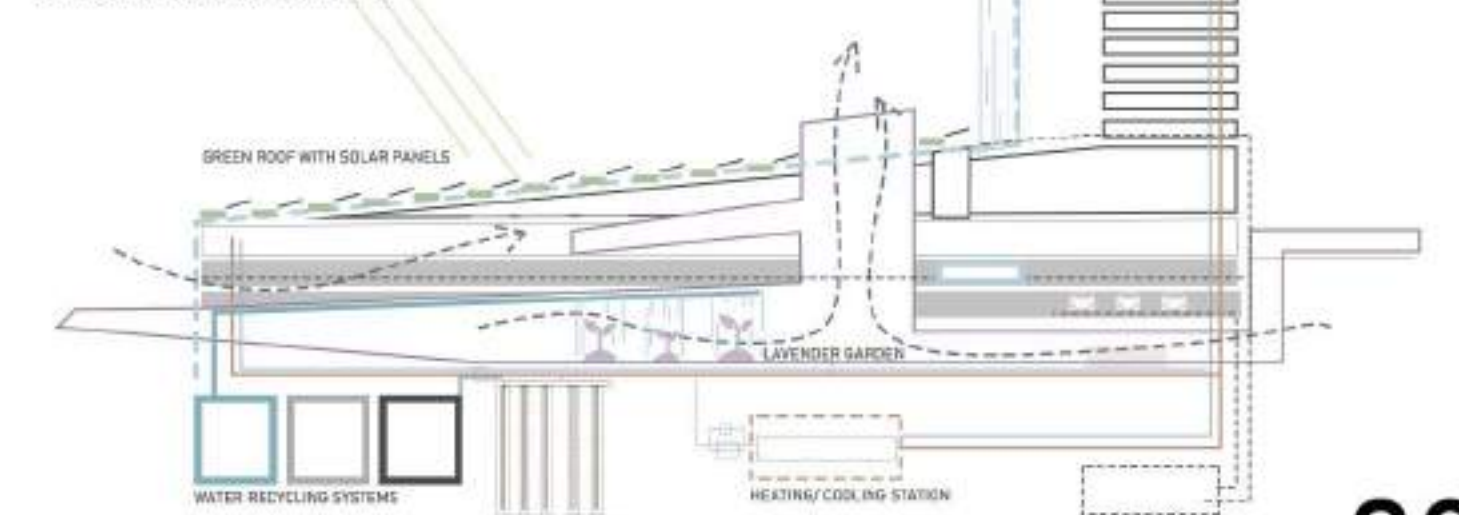
INLAY



LIGHT, MIRRORS AND SOLAR TUBES



SUSTAINABILITY



MARIEX3